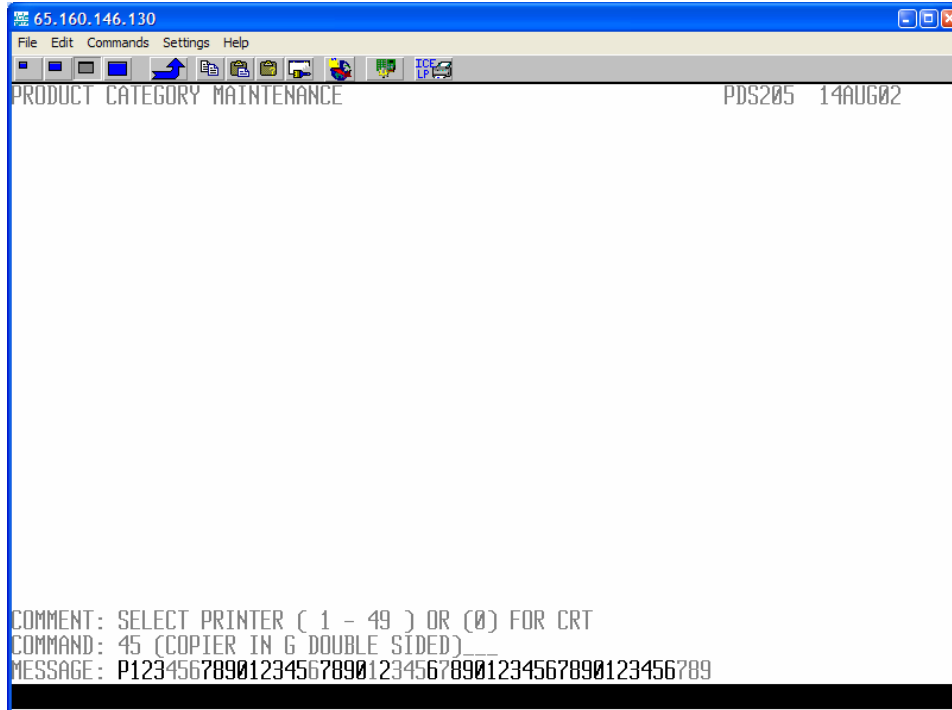


Accounting & Technical Support For Petroleum Marketers!

A number of prior patches are coming together to allow the system to store and offer printer number defaults, by user.



Here is a shot of a printer selection prompt where Printer 45 is known to be this user's default report printer. The user can still enter whatever printer number they wish, but if they just hit <RETURN>, the default printer will be selected.

The idea here is not so much to save keystrokes as it is to discourage people from picking the wrong printer, resulting in a report coming out in the wrong building, on the wrong stock, or even in the wrong town.

We are showing a printer description for improved feedback to the user. See the bulletin on *Printers – Additional Information* if you lack this.

This jobber's printer 45 is printing to both sides of the page, thus conserving paper, and prints to a multi-use printer/copier. Perhaps not all of you are aware that we can do such things --- we can; we just need to set these up on a case by case basis.

Accounting & Technical Support For Petroleum Marketers!

There are three ways to handle one user's printer default. We have created a new file – USERFILE and a maintenance utility to edit it.

```
65.160.146.130
File Edit Command Settings Help
USER MAINTENANCE          MODIFY          TP001  10JAN05

1) USER ID.....: bills
2) E-MAIL ADDRESS..: bills@petroleumrx.com
3) INITIALS.....: WMS
4) MENU OVERRIDE...: credit
5) PRINTER DEFAULT.: ( learn by watching - now 20 )

COMMENT: ENTER ITEM NUMBER TO MODIFY
COMMAND: _
MESSAGE:
```

This is a shot of the new User Maintenance screen (at 5, 65, 9). It duplicates what we have been keeping at 3, 30, 24, 14 and will eventually replace it. Now, instead of keying things by Initials, we are using the UNIX login ID as our primary key.

Note field #5, for Printer Default. Here is where we set the user default. The three modes:

First, one can specify a printer number and that becomes the default. That's the obvious choice.

Second, one can specify no default. Use this for people who truly lack a default or for users where the default prompt is an unwelcome distraction.

Third, one can have the system watch what the user picks and learn from that. Two picks in a row to the same printer and that becomes their new default.

Cost: Presuming the prerequisites are in place, 1.75 hours.